

Instruction manual EZ3 tool

Update status: 12.09.2019

The software language is only German till now. It will be translated soon...

Content:

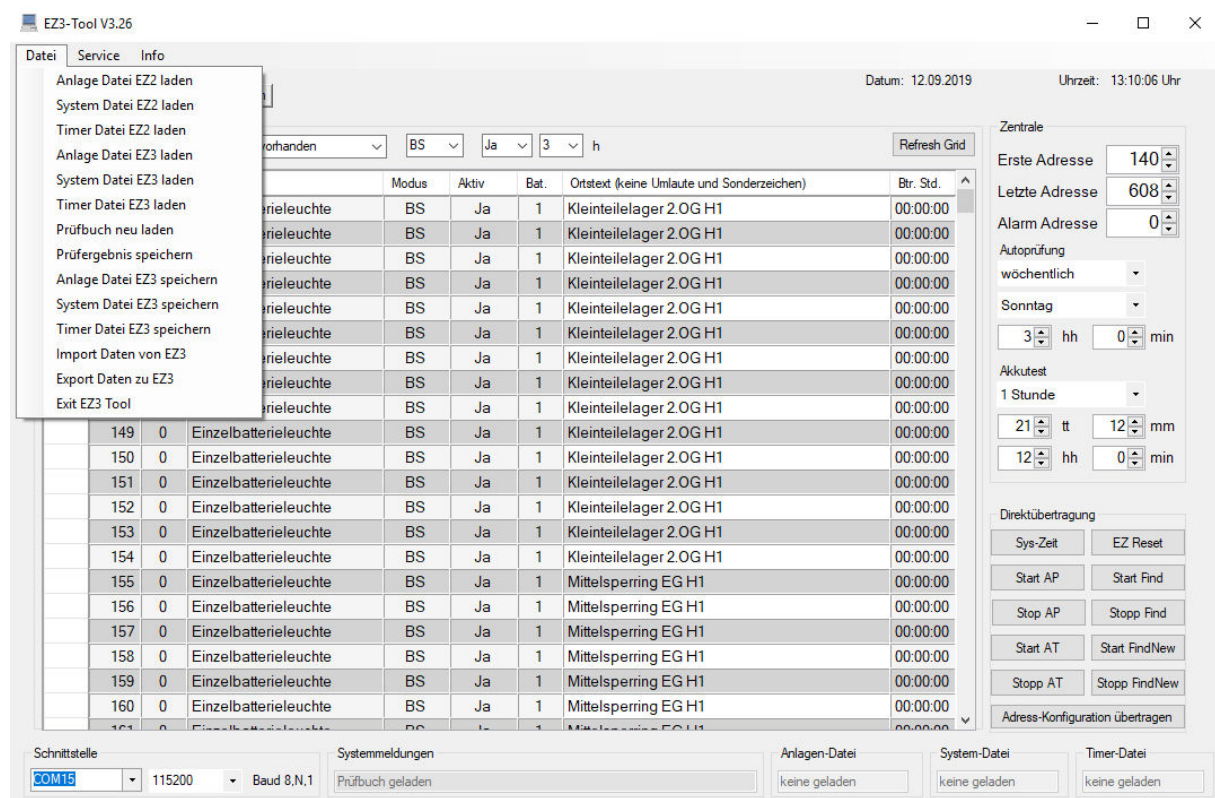
1. [General](#)
2. [Menu control](#)
 - a. [File menu](#)
 - b. [Service menu](#)
 - c. [Info menu](#)
3. [Workspaces](#)
 - a. [Configuration](#)
 - b. [Timers](#)
 - c. [Test book](#)
 - d. [Configurator LSM/PCON](#)
4. [Error handling](#)

General

The EZ3 tool facilitates the configuration of an EZ3 (new version from 2019). It can do the complete management of the data and the configuration of a plant via PC or laptop. Important: The tool is not a visualization of the EZ3, but a pure configuration module for the EZ3 and the emergency lighting system.

Menu control

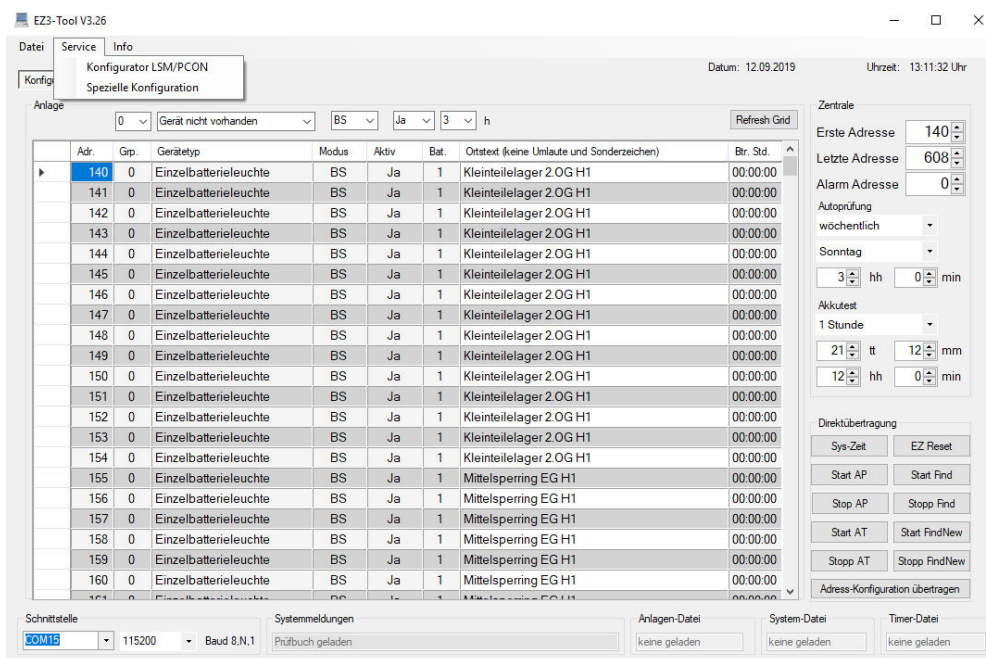
File menu



Here are all functions that belong to the file management. Configuration files of the EZ2 tool can be read in and exported to the EZ3 or saved as configuration files in the EZ3 formatting. All EZ3 configurations can be read in with "Import" and saved separately. The entries in the file menu are self-explanatory.

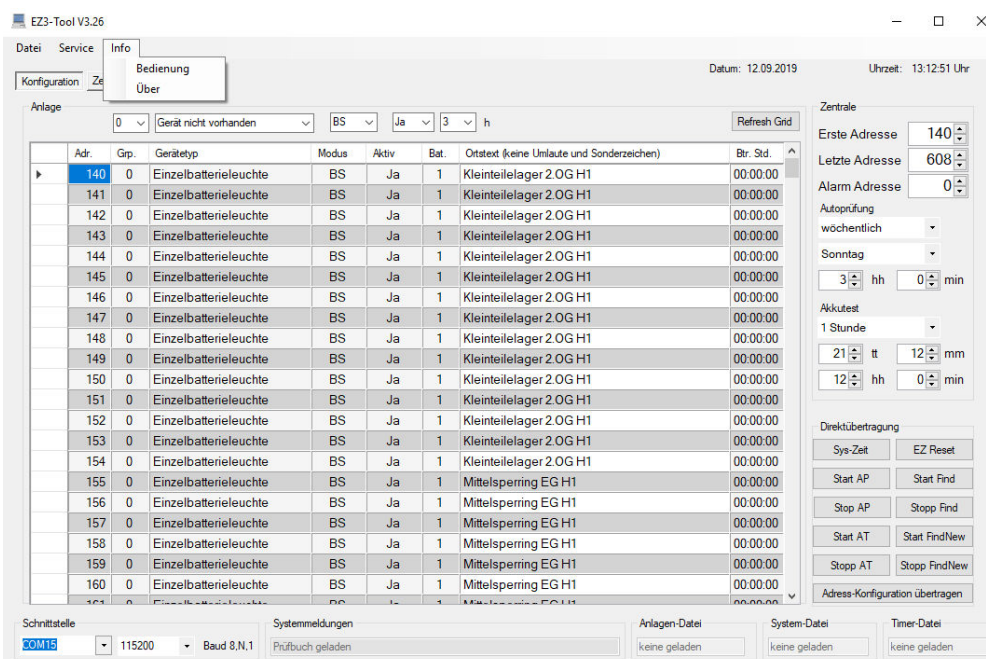
Service menu:

The configuration module for LSM and PCON modules can be called up in the service menu. LSM modules are currently not supported by the EZ3.



Info menu

In the info menu you can find this manual and information about the software.



Workspaces

Configuration

Adr.	Grp.	Gerätetyp	Modus	Aktiv	Bat.	Ortstext (keine Umlaute und Sonderzeichen)	Btr. Std.
140	0	Einzelbatterieleuchte	BS	Ja	1	Kleinteilelager 2.OG H1	00:00:00
141	0	Einzelbatterieleuchte	BS	Ja	1	Kleinteilelager 2.OG H1	00:00:00
142	0	Einzelbatterieleuchte	BS	Ja	1	Kleinteilelager 2.OG H1	00:00:00
143	0	Einzelbatterieleuchte	BS	Ja	1	Kleinteilelager 2.OG H1	00:00:00
144	0	Einzelbatterieleuchte	BS	Ja	1	Kleinteilelager 2.OG H1	00:00:00
145	0	Einzelbatterieleuchte	BS	Ja	1	Kleinteilelager 2.OG H1	00:00:00
146	0	Einzelbatterieleuchte	BS	Ja	1	Kleinteilelager 2.OG H1	00:00:00
147	0	Einzelbatterieleuchte	BS	Ja	1	Kleinteilelager 2.OG H1	00:00:00
148	0	Einzelbatterieleuchte	BS	Ja	1	Kleinteilelager 2.OG H1	00:00:00
149	0	Einzelbatterieleuchte	BS	Ja	1	Kleinteilelager 2.OG H1	00:00:00
150	0	Einzelbatterieleuchte	BS	Ja	1	Kleinteilelager 2.OG H1	00:00:00
151	0	Einzelbatterieleuchte	BS	Ja	1	Kleinteilelager 2.OG H1	00:00:00
152	0	Einzelbatterieleuchte	BS	Ja	1	Kleinteilelager 2.OG H1	00:00:00
153	0	Einzelbatterieleuchte	BS	Ja	1	Kleinteilelager 2.OG H1	00:00:00
154	0	Einzelbatterieleuchte	BS	Ja	1	Kleinteilelager 2.OG H1	00:00:00
155	0	Einzelbatterieleuchte	BS	Ja	1	Mittelsperring EG H1	00:00:00
156	0	Einzelbatterieleuchte	BS	Ja	1	Mittelsperring EG H1	00:00:00
157	0	Einzelbatterieleuchte	BS	Ja	1	Mittelsperring EG H1	00:00:00
158	0	Einzelbatterieleuchte	BS	Ja	1	Mittelsperring EG H1	00:00:00
159	0	Einzelbatterieleuchte	BS	Ja	1	Mittelsperring EG H1	00:00:00
160	0	Einzelbatterieleuchte	BS	Ja	1	Mittelsperring EG H1	00:00:00

After selecting the interface, the tool automatically connects to the EZ3 and retrieves all settings and required data. This is plant-specific data such as address, group address, BS/DS mode, on/off (active), battery runtime, location texts and runtime of the last operating duration test. In addition, the EZ3-specific configuration with the address settings and test times is read in. Timers and test book are also updated in the background. All information of the addresses 1-999 are read in. During this time, no operation of the tool is possible.

The following configuration parameters can be changed:

- Location text by direct input.
- Group address, operating mode, active/not active and battery time by marking the corresponding line in the left column (multiple selection possible) and changing the desired parameter above the columns.
- Addresses and test time parameters on the right side (central).

The "buttons" for direct transmission directly trigger the corresponding function:

- "Sys-Time" transmits the PC time and date to the EZ3
- "EZ-Reset" performs a software reset.
- "Start-AP" starts the autotest, "Stop-AP" stops it.
- "Start-AT" starts the operating duration test, "Stop-AT" stops it.
- "Start-Find" starts the automatic address search, "Stop-Find" stops it.
- "Start-FindNew" starts the search for new addresses, "Stop-FindNew" stops it.
- "Transfer address configuration" causes the EZ3 to send the configuration data of the address modules to it. When exporting the tooldata to the EZ3, these are only stored in the EZ3. For transmission to the modules this function is required.

Timers

EZ3-Tool V3.26

Datei Service Info

Konfiguration Zeitschaltuhren Prüfbuch

Datum: 12.09.2019 Uhrzeit: 13:15:07 Uhr

Nummer	Funktion	Adresse	Gruppe	Trigger	Stunde	Minute	Tag	Wochentag
1	Dauerlicht einschalten	1	--	täglich	9	25	--	--
2	Dauerlicht ausschalten	1	--	täglich	9	26	--	--
3	Dauerlicht einschalten	2	--	täglich	9	27	--	--
4	Dauerlicht ausschalten	2	--	täglich	9	28	--	--
5	Dauerlicht einschalten	3	--	täglich	9	29	--	--
6	Dauerlicht ausschalten	3	--	täglich	9	30	--	--
7	Dauerlicht einschalten	4	--	täglich	9	31	--	--
8	Dauerlicht ausschalten	4	--	täglich	9	32	--	--
9	Dauerlicht einschalten	5	--	täglich	9	33	--	--
10	Dauerlicht ausschalten	5	--	täglich	9	34	--	--
11	Dauerlicht einschalten	6	--	täglich	9	35	--	--
12	Dauerlicht ausschalten	6	--	täglich	9	36	--	--
13	Dauerlicht einschalten	7	--	täglich	9	37	--	--
14	Dauerlicht ausschalten	7	--	täglich	9	38	--	--
15	Dauerlicht einschalten	8	--	täglich	9	39	--	--
16	Dauerlicht ausschalten	8	--	täglich	9	40	--	--
17	Dauerlicht einschalten	9	--	täglich	9	41	--	--
18	Dauerlicht ausschalten	9	--	täglich	9	42	--	--
19	Dauerlicht einschalten	10	--	täglich	9	43	--	--
20	Dauerlicht ausschalten	10	--	täglich	9	44	--	--

Schnittstelle: COM15 115200 Baud 8,N,1

Systemmeldungen: Prüfbuch geladen

Anlagen-Datei: keine geladen

System-Datei: keine geladen

Timer-Datei: keine geladen

This is where the "timers" are configured. Functions are:

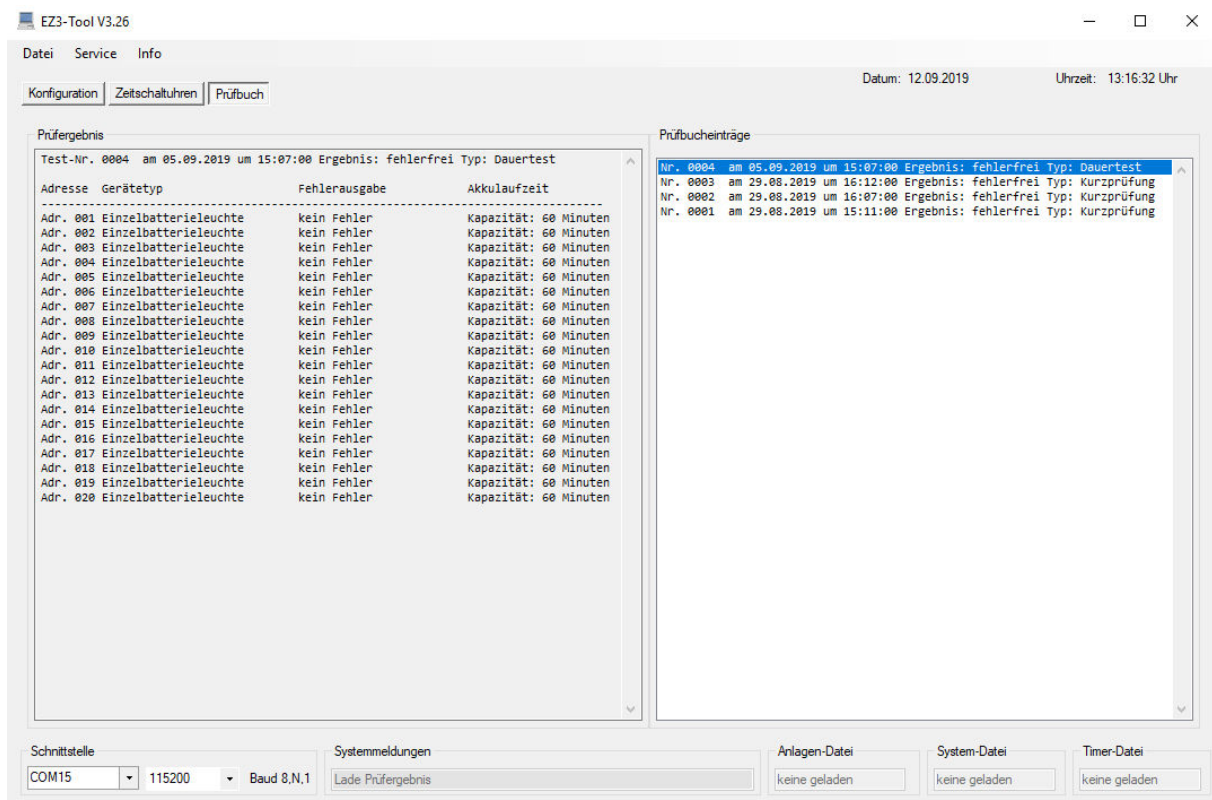
- No function (timer not assigned)
- Switch on permanent light
- Switch off permanent light
- Switch on emergency light blocking (remote switch)
- Switch off emergency light blocking (remote switch)

Further configuration parameters are the trigger time (trigger) and affected address or address group. A separate timer must be used for each function. For example, two timers must be assigned for switching a permanent light on and off. The first one switches on, the second one switches off.

With the address "ALL" all address modules are addressed. Either an address or a group can be specified. Both in one configuration is not possible.

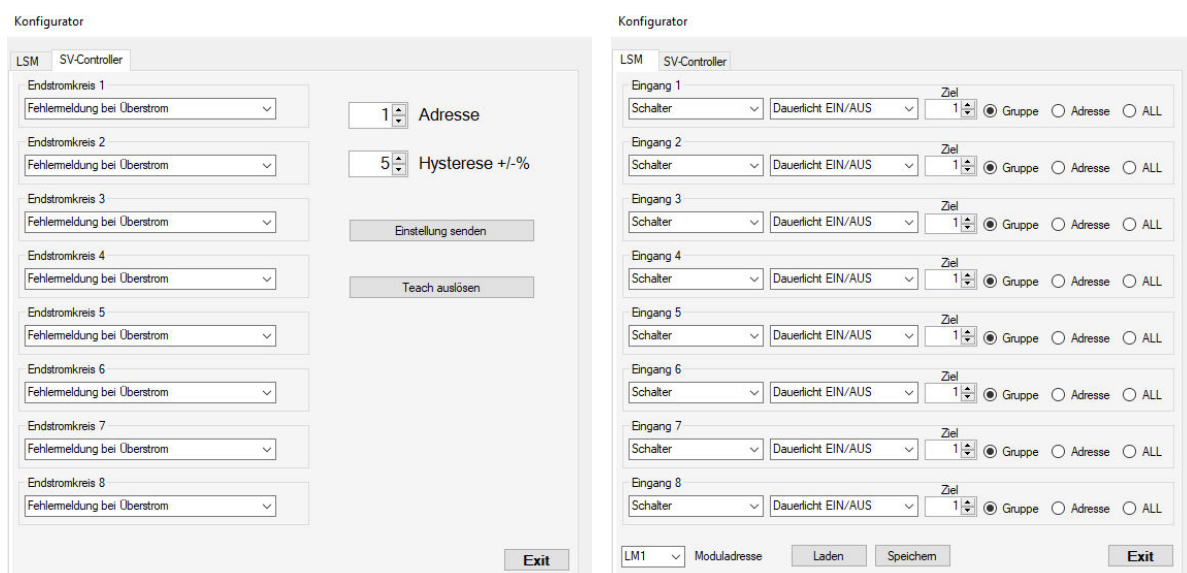
Saving in the EZ3 is done with the "Export" command in the File menu. Here, too, all addresses 1-999 are transferred.

Test book



The test book menu shows the test book entries on the right side. By selecting an entry, the test result is displayed on the left side. Individual or all test results can be saved for archiving via the file menu.

Configurator LSM/PCON



The configurator allows the configuration of special address blocks. A connected PCON can be set here for the corresponding error modes and a "Teach" (detect and save the connected load) can be triggered.

The configurator for light switch modules is to be regarded as a beta version, as this function is still being tested in EZ3 and is still blocked for delivery.

Special configuration

Spezielle Konfiguration

Helligkeit Dauerlicht					
1	<input checked="" type="radio"/> Adresse <input type="radio"/> ALL	100	% Helligkeit = HEX	FF	Send Speichern

Helligkeit Notlicht					
1	<input checked="" type="radio"/> Adresse <input type="radio"/> ALL	100	% Helligkeit = HEX	FF	Send Speichern

Helligkeit Theaterlicht					
1	<input checked="" type="radio"/> Adresse <input type="radio"/> ALL	30	% Helligkeit = HEX	4C	Send Speichern

Theaterfunktion EIN Dauerlicht EIN Bereitschaftslicht EIN

Exit

In this menu the parameter configuration of the address modules is carried out. The menu is supplemented from time to time. At the moment the brightness parameters of the NM08 modules can be configured here. Here the brightness can be set separately for permanent light, emergency light and theater light. The assignment goes for single address, group addresses or all addresses. With the buttons the configuration can be tested.

Error handling:

No data will be imported after the interface selection.

- Check whether the correct interface has been selected
- Select interface again
- Check baud rate (in EZ3, system menu, interface PC, 115200 baud)

No devices are displayed

- No "Find" has been triggered yet. The found devices are only entered by this function.

A "Bus error" is reported on the display

- There is a short circuit

The alarm LED lights up and cannot be reset

- The last test has detected errors
- To clear the alarm LED, an error-free test must have preceded.
- The alarm relay is reset by pressing a key, not the LED.